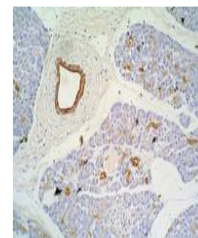


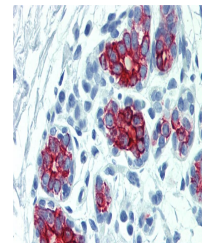
## Product Datasheet

### Cytokeratin 7/17 antibody (orb43713)

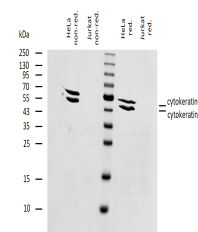
<b>Description</b>	Mouse Monoclonal to Cytokeratin 7/17.
<b>Reactivity</b>	Bovine, Human, Porcine
<b>Conjugation</b>	Unconjugated
<b>Tested Applications</b>	ICC, IHC-P, IP, WB
<b>Immunogen</b>	Cytoskeleton preparation of HeLa human cervix carcinoma cell line.
<b>Target</b>	Cytokeratin 7/17
<b>Preservatives</b>	Phosphate buffered saline (PBS), pH 7.4, 15 mM sodium azide
<b>Concentration</b>	1 mg/ml
<b>Storage</b>	Store at 2-8°C. Do not freeze.
<b>Note</b>	For research use only
<b>Application notes</b>	Immunohistochemistry (paraffin sections): Recommended dilution: 10 µg/ml, pretreatment: 0,1% pepsin, 30 min, 37°C, incubation 4°C overnight, chromogen DAB; positive tissue: pancreas. Western blotting: Recommended dilution: 1-2 µg/ml; positive control: HeLa cells.
<b>Isotype</b>	Mouse IgG1
<b>Clonality</b>	Monoclonal
<b>Purity</b>	Purified by protein-A affinity chromatography.
<b>Dilution Range</b>	Immunohistochemistry (paraffin sections): Recommended dilution: 10 µg/ml, pretreatment: 0,1% pepsin, 30 min, 37°C, incubation 4°C overnight, chromogen DAB; positive tissue: pancreas. Western blotting: Recommended dilution: 1-2 µg/ml; positive control: HeLa cells.
<b>Expiration Date</b>	12 months from date of receipt.



Immunohistochemistry staining of pancrea...



Immunohistochemistry staining of human b...



Western blotting analysis of human cytok...