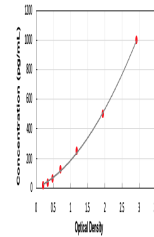


Product Datasheet

Canine IFN β ELISA Kit (orb437059)

Description	Canine Interferon Beta (IFN β) Sandwich ELISA Kit
Reactivity	Canine
Range	15.625-1000pg/mL
Form/Appearance	Traditional
Storage	All reagents should be kept according to the instructions on the packaging upon receipt.
Note	For research use only
Application notes	serum, plasma, tissue homogenates, cell lysates, cell culture supernates and other biological fluids.
Sample Types	serum, plasma, tissue homogenates, cell lysates, cell culture supernatants and other biological fluids.
Uniprot ID	B6E116
Sensitivity	5.6pg/mL
Entrez	481558
Expiration Date	Please enquire.



Standard Curve of Canine IFN β ELISA Kit.