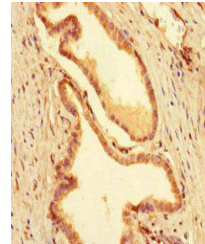


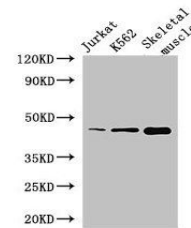
Product Datasheet

MEIS1 antibody (orb43613)

Description	MEIS1 antibody
Species/Host	Rabbit
Reactivity	Human, Mouse
Conjugation	Unconjugated
Tested Applications	ELISA, IHC, IP, WB
Immunogen	Recombinant Human Homeobox protein Meis1 protein (1-90AA)
Target	MEIS1
Preservatives	Preservative: 0.03% Proclin 300. Constituents: 50% Glycerol
Form/Appearance	Liquid
Storage	Maintain refrigerated at 2-8°C for up to 2 weeks. For long term storage store at -20°C in small aliquots to prevent freeze-thaw cycles.
Note	For research use only
Isotype	IgG
Clonality	Polyclonal
Uniprot ID	O00470
Dilution Range	WB:1:2000-10000, IHC-P:1:20-200, IP:1:200-2000
Expiration Date	12 months from date of receipt.



Immunohistochemistry of paraffin-embedde...



Western blot aanalysis of Jurkat whole c...