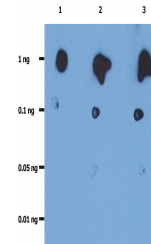


Product Datasheet

HIV protease antibody (orb43578)

Description	Mouse Monoclonal to HIV protease.
Reactivity	Virus
Conjugation	Unconjugated
Tested Applications	ELISA, WB
Immunogen	Bacterially expressed full-length HIV-1 protease
Target	HIV protease (HIV-1/HIV-2)
Preservatives	Phosphate buffered saline (PBS), pH 7.4, 15 mM sodium azide
Concentration	1 mg/ml
Storage	Store at 2-8°C. Do not freeze.
Note	For research use only
Application notes	Western blotting: Recommended dilution: 0.5 µg/ml.
Isotype	Mouse IgG1
Clonality	Monoclonal
Purity	Purified by protein-A affinity chromatography.
Dilution Range	Western blotting: Recommended dilution: 0.5 µg/ml.
Expiration Date	12 months from date of receipt.



Dot blot analysis of recombinant HIV pro...