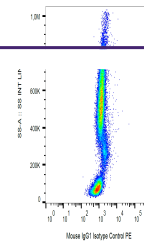

Product Datasheet

Mouse IgG1 Isotype Control antibody (orb43528)

Description	Mouse IgG1 Isotype Control
Conjugation	PE
Tested Applications	FC
Preservatives	Stabilizing phosphate buffered saline (PBS), pH 7.4, 15 mM sodium azide
Concentration	0.1 mg/ml
Storage	Store at 2-8°C. Protect from prolonged exposure to light. Do not freeze.
Note	For research use only
Application notes	Negative control: The reagent is intended as an isotype control to establish the amount of non-specific antibody binding. For your particular experiment, use the same concentration of this control antibody as the recommended working concentration of the antigen-specific antibody. Also, when working with prediluted antibodies, dilute the isotype control to the same concentration as is the concentration of the antigen-specific antibody in the prediluted antibody solution you are using. If under particular experimental conditions the background signal of the isotype control is too high (usually when working concentrations of used antibodies are above 10 µg/ml of incubation mixture), change the conditions of your experiment to reduce the background.
Isotype	Mouse IgG1 kappa
Clonality	Monoclonal
Purity	Purified antibody is conjugated with R-phycoerythrin (PE) under optimum conditions. Unconjugated antibody and free fluorochrome are removed by size-exclusion chromatography.
Dilution Range	FACS: 10 µg/ml
Expiration Date	12 months from date of receipt.



Example of nonspecific mouse IgG1 (MOPC-...