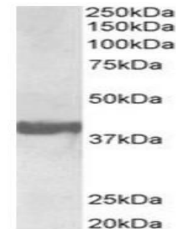


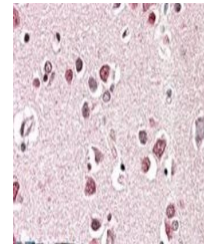
Product Datasheet

SH3GL2 antibody (orb43524)

Description	Goat polyclonal antibody to SH3GL2
Species/Host	Goat
Reactivity	Human, Porcine
Conjugation	Unconjugated
Tested Applications	ELISA, IHC, WB
Target	Endophilin-A1 / SH3GL2
Preservatives	Supplied at 0.5 mg/ml in Tris saline, 0.02% sodium azide, pH 7.3 with 0.5% bovine serum albumin. Aliquot and store at -20°C. Minimize freezing and thawing.
Concentration	0.5 mg/ml
Storage	Aliquot and store at -20°C. Minimize freezing and thawing.
Note	For research use only
Application notes	WB: Approx 38kDa band observed in Human Brain (Frontal Cortex) lysates (calculated MW of 40.0kDa according to NP_003017.1). Recommended concentration: 0.3-1µg/ml.. IHC: In paraffin embedded Human Cerebral Cortex shows staining of cytoplasm in some but not all neuronal cells. Recommended concentration, 5-10µg/ml.
Protein Sequence	SLEFPTGDSTQPN
Clonality	Polyclonal
MW	40
Entrez	6456
Dilution Range	ELISA: 1:64000, WB: 0.3-1 µg/ml, IHC-P: 5-10µg/ml
Expiration Date	12 months from date of receipt.



Western blot analysis of Human Frontal C...



Immunohistochemical staining of Human Ce...