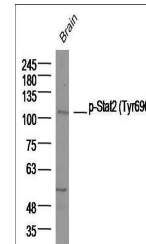


Product Datasheet

Stat2 (phospho-Tyr690) antibody (orb43348)

Description	Stat2 (phospho-Tyr690) antibody
Species/Host	Rabbit
Reactivity	Mouse
Conjugation	Unconjugated
Tested Applications	IHC-P, WB
Immunogen	KLH conjugated Synthesised phosphopeptide derived from human Stat2 around the phosphorylation site of Tyr690 (RK(p-Y)LK)
Target	Phospho-Stat2 (Tyr690)
Preservatives	0.01M TBS(pH7.4) with 1% rAlbumin, 0.03% Proclin300 and 50% Glycerol.
Form/Appearance	Liquid
Concentration	1mg/ml
Storage	Shipped at 4°C. Store at -20 °C for one year. Avoid repeated freeze/thaw cycles.
Note	For research use only
Isotype	IgG
Clonality	Polyclonal
MW	94 kDa
Uniprot ID	P52630
Dilution Range	WB=1:500-2000, IHC-P=1:100-500
Expiration Date	12 months from date of receipt.



Western blot analysis of Brain Mouse Lys...