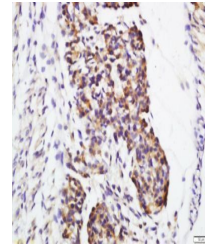


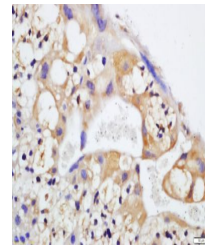
Product Datasheet

Galectin 1 antibody (orb4299)

Description	Galectin 1 antibody
Species/Host	Rabbit
Reactivity	Mouse
Conjugation	Unconjugated
Tested Applications	IHC-P, WB
Immunogen	KLH conjugated synthetic peptide derived from human Galectin 1 (65-135/135 aa)
Target	Galectin 1
Preservatives	0.01M TBS(pH7.4) with 1% rAlbumin, 0.03% Proclin300 and 50% Glycerol.
Form/Appearance	Liquid
Concentration	1mg/ml
Storage	Shipped at 4°C. Store at -20 °C for one year. Avoid repeated freeze/thaw cycles.
Note	For research use only
Isotype	IgG
Clonality	Polyclonal
MW	15 kDa
Uniprot ID	P09382
Dilution Range	WB=1:500-2000, IHC-P=1:100-500
Expiration Date	12 months from date of receipt.



Immunohistochemical staining of mouse em...



Immunohistochemical staining of mouse pl...