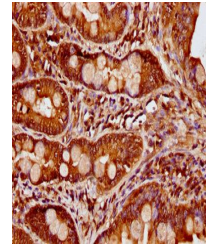


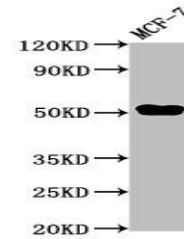
Product Datasheet

CCDC6 antibody (orb423085)

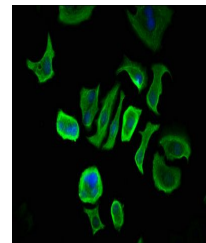
Description	CCDC6 antibody
Species/Host	Rabbit
Reactivity	Human
Conjugation	Unconjugated
Tested Applications	ELISA, IF, IHC, WB
Immunogen	Recombinant Human Coiled-coil domain-containing protein 6 protein (347-440AA)
Target	CCDC6
Preservatives	Preservative: 0.03% Proclin 300. Constituents: 50% Glycerol
Form/Appearance	Liquid
Storage	Upon receipt, store at -20°C or -80°C. Avoid repeated freeze.
Note	For research use only
Isotype	IgG
Clonality	Polyclonal
Uniprot ID	Q16204
Dilution Range	WB:1:500:5000, IHC-P:1:500:1000, IF/ICC:1:50:200
Expiration Date	12 months from date of receipt.



Immunohistochemistry of paraffin-embedde...



Western blot analysis of MCF-7 whole ce...



Immunofluorescence staining of MCF-7 cel...