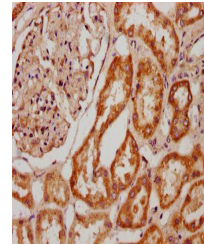


Product Datasheet

GLDC antibody (orb423073)

Description	GLDC antibody
Species/Host	Rabbit
Reactivity	Human
Conjugation	Unconjugated
Tested Applications	ELISA, IHC
Immunogen	Recombinant Human Glycine dehydrogenase (decarboxylating), mitochondrial protein (868-984AA)
Target	GLDC
Preservatives	Preservative: 0.03% Proclin 300. Constituents: 50% Glycerol
Form/Appearance	Liquid
Storage	Maintain refrigerated at 2-8°C for up to 2 weeks. For long term storage store at -20°C in small aliquots to prevent freeze-thaw cycles.
Note	For research use only
Isotype	IgG
Clonality	Polyclonal
Uniprot ID	P23378
Dilution Range	IHC-P:1:500:1000
Expiration Date	12 months from date of receipt.



Immunohistochemistry of paraffin-embedde...