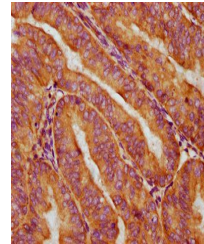


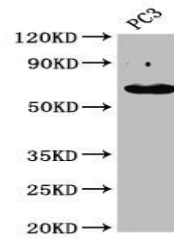
Product Datasheet

KRT76 antibody (orb423028)

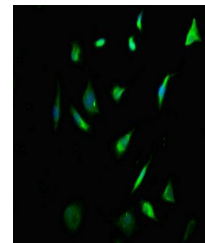
Description	KRT76 antibody
Species/Host	Rabbit
Reactivity	Human
Conjugation	Unconjugated
Tested Applications	ELISA, IF, IHC, WB
Immunogen	Recombinant Human Keratin, type II cytoskeletal 2 oral protein (173-283AA)
Target	KRT76
Preservatives	Preservative: 0.03% Proclin 300. Constituents: 50% Glycerol
Form/Appearance	Liquid
Storage	Maintain refrigerated at 2-8°C for up to 2 weeks. For long term storage store at -20°C in small aliquots to prevent freeze-thaw cycles.
Note	For research use only
Isotype	IgG
Clonality	Polyclonal
Uniprot ID	Q01546
Dilution Range	WB:1:500:5000, IHC-P:1:200:500, IF/ICC:1:50:200
Expiration Date	12 months from date of receipt.



Immunohistochemistry of paraffin-embedde...



Western blot analysis of PC-3 whole cel...



Immunofluorescence staining of SH-SY5Y c...