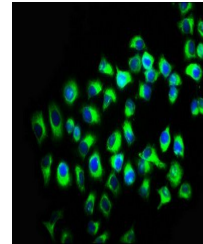


Product Datasheet

KIR2DL2 antibody (orb423025)

Description	KIR2DL2 antibody
Species/Host	Rabbit
Reactivity	Human
Conjugation	Unconjugated
Tested Applications	ELISA, IF
Immunogen	Recombinant Human Killer cell immunoglobulin-like receptor 2DL2 protein (22-245AA)
Target	KIR2DL2
Preservatives	Preservative: 0.03% Proclin 300. Constituents: 50% Glycerol
Form/Appearance	Liquid
Storage	Maintain refrigerated at 2-8°C for up to 2 weeks. For long term storage store at -20°C in small aliquots to prevent freeze-thaw cycles.
Note	For research use only
Isotype	IgG
Clonality	Polyclonal
Uniprot ID	P43627
Dilution Range	IF/ICC:1:50:200
Expiration Date	12 months from date of receipt.



Immunofluorescence staining of A549 cell...