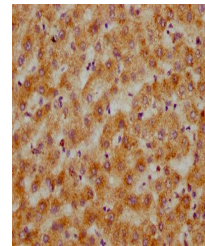


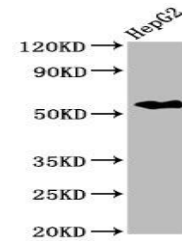
Product Datasheet

CPNE3 antibody (orb423007)

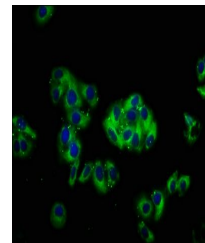
Description	CPNE3 antibody
Species/Host	Rabbit
Reactivity	Human
Conjugation	Unconjugated
Tested Applications	ELISA, IF, IHC, WB
Immunogen	Recombinant Human Copine-3 protein (297-442AA)
Target	CPNE3
Preservatives	Preservative: 0.03% Proclin 300. Constituents: 50% Glycerol
Form/Appearance	Liquid
Storage	Maintain refrigerated at 2-8°C for up to 2 weeks. For long term storage store at -20°C in small aliquots to prevent freeze-thaw cycles.
Note	For research use only
Isotype	IgG
Clonality	Polyclonal
Uniprot ID	O75131
Dilution Range	WB:1:500:5000, IHC-P:1:200:500, IF/ICC:1:50:200
Expiration Date	12 months from date of receipt.



Immunohistochemistry of paraffin-embedde...



Western blot analysis of HepG2 whole ce...



Immunofluorescence staining of HepG2 cel...