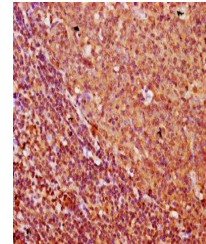


Product Datasheet

FREM1 antibody (orb422898)

Description	FREM1 antibody
Species/Host	Rabbit
Reactivity	Human
Conjugation	Unconjugated
Tested Applications	ELISA, IHC
Immunogen	Recombinant Human FRAS1-related extracellular matrix protein 1 protein (1957-2082AA)
Target	FREM1
Preservatives	Preservative: 0.03% Proclin 300. Constituents: 50% Glycerol
Form/Appearance	Liquid
Storage	Maintain refrigerated at 2-8°C for up to 2 weeks. For long term storage store at -20°C in small aliquots to prevent freeze-thaw cycles.
Note	For research use only
Isotype	IgG
Clonality	Polyclonal
Uniprot ID	Q5H8C1
Dilution Range	IHC-P:1:500:1000
Expiration Date	12 months from date of receipt.



Immunohistochemistry
of paraffin-embedde...