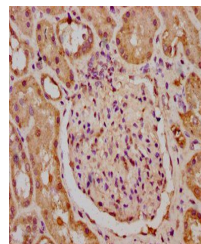


Product Datasheet

KIF23 antibody (orb422874)

Description	KIF23 antibody
Species/Host	Rabbit
Reactivity	Human
Conjugation	Unconjugated
Tested Applications	ELISA, IHC
Immunogen	Recombinant Human Kinesin-like protein KIF23 protein (865-960AA)
Target	KIF23
Preservatives	Preservative: 0.03% Proclin 300. Constituents: 50% Glycerol
Form/Appearance	Liquid
Storage	Maintain refrigerated at 2-8°C for up to 2 weeks. For long term storage store at -20°C in small aliquots to prevent freeze-thaw cycles.
Note	For research use only
Isotype	IgG
Clonality	Polyclonal
Uniprot ID	Q02241
Dilution Range	IHC-P:1:200:500
Expiration Date	12 months from date of receipt.



Immunohistochemistry of paraffin-embedde...