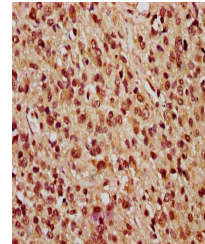


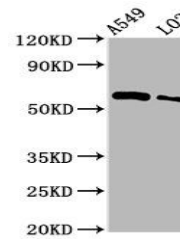
Product Datasheet

PARP3 antibody (orb422841)

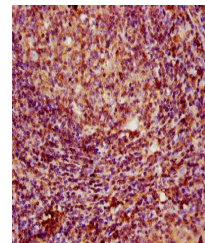
Description	PARP3 antibody
Species/Host	Rabbit
Reactivity	Human
Conjugation	Unconjugated
Tested Applications	ELISA, IHC, WB
Immunogen	Recombinant Human Poly [ADP-ribose] polymerase 3 protein (1-240AA)
Target	PARP3
Preservatives	Preservative: 0.03% Proclin 300. Constituents: 50% Glycerol
Form/Appearance	Liquid
Storage	Maintain refrigerated at 2-8°C for up to 2 weeks. For long term storage store at -20°C in small aliquots to prevent freeze-thaw cycles.
Note	For research use only
Isotype	IgG
Clonality	Polyclonal
Uniprot ID	Q9Y6F1
Dilution Range	WB:1:500:5000, IHC-P:1:20:200
Expiration Date	12 months from date of receipt.



Immunohistochemistry of paraffin-embedde...



Western blot analysis of A549 whole cel...



Immunohistochemistry of paraffin-embedde...