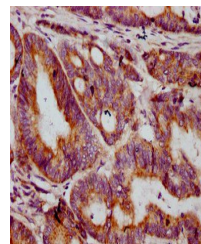


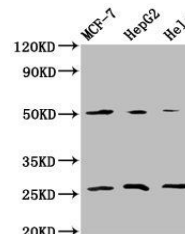
Product Datasheet

MT-CO2 antibody (orb422832)

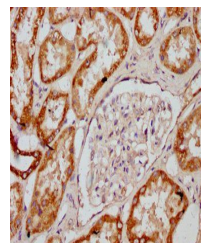
Description	MT-CO2 antibody
Species/Host	Rabbit
Reactivity	Human
Conjugation	Unconjugated
Tested Applications	ELISA, IHC, WB
Immunogen	Recombinant Human Cytochrome c oxidase subunit 2 protein (83-227AA)
Target	MT-CO2
Preservatives	Preservative: 0.03% Proclin 300. Constituents: 50% Glycerol
Form/Appearance	Liquid
Storage	Maintain refrigerated at 2-8°C for up to 2 weeks. For long term storage store at -20°C in small aliquots to prevent freeze-thaw cycles.
Note	For research use only
Isotype	IgG
Clonality	Polyclonal
Uniprot ID	P00403
Dilution Range	WB:1:500:5000, IHC-P:1:200:500
Expiration Date	12 months from date of receipt.



Immunohistochemistry of paraffin-embedde...



Western blot aanalysis of MCF-7 whole ce...



Immunohistochemistry of paraffin-embedde...