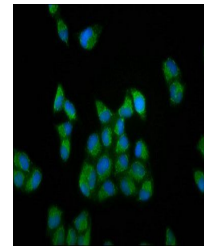


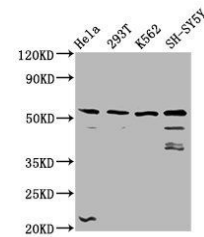
Product Datasheet

RUFY3 antibody (orb422698)

Description	RUFY3 antibody
Species/Host	Rabbit
Reactivity	Human
Conjugation	Unconjugated
Tested Applications	ELISA, IF, WB
Immunogen	Recombinant Human Protein RUFY3 protein (243-352AA)
Target	RUFY3
Preservatives	Preservative: 0.03% Proclin 300. Constituents: 50% Glycerol
Form/Appearance	Liquid
Storage	Maintain refrigerated at 2-8°C for up to 2 weeks. For long term storage store at -20°C in small aliquots to prevent freeze-thaw cycles.
Note	For research use only
Isotype	IgG
Clonality	Polyclonal
Uniprot ID	Q7L099
Dilution Range	WB:1:500:5000, IF/ICC:1:50:200
Expiration Date	12 months from date of receipt.



Immunofluorescence staining of HeLa cell...



Western blot analysis of HeLa whole cel...