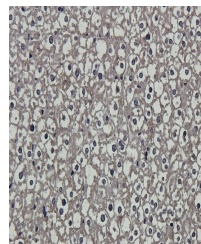


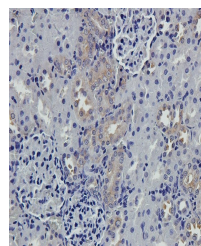
Product Datasheet

S13A2 antibody (orb422565)

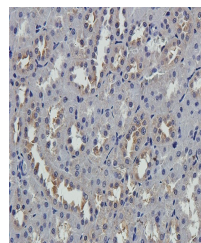
Description	S13A2 antibody
Species/Host	Rabbit
Reactivity	Human, Mouse, Porcine, Rat
Conjugation	Unconjugated
Tested Applications	IHC-P, WB
Immunogen	KLH conjugated synthetic peptide derived from human S13A2. Please contact us for the exact immunogen sequence.
Target	S13A2
Form/Appearance	10 mM PBS, 0.02% sodium azide
Concentration	- 100 µg (in 200 µl): 0.5 mg/ml & - 200 µg (in 400 µl): 0.5 mg/ml
Storage	Store at 4°C for up to two weeks. For long term storage, aliquot and store at -20°C, avoid freeze/thaw cycles.
Note	For research use only
Isotype	IgG
Clonality	Polyclonal
Purity	Polyclonal antibodies are purified by peptide affinity chromatography
MW	64 kDa
Uniprot ID	Q13183
Dilution Range	IHC-P: 1:100-500, WB: 1:100-800
Expiration Date	12 months from date of receipt.



Immunohistochemical staining of mouse li...



Immunohistochemical staining of rat kidn...



IHC-P image of rat kidney tissue using S...