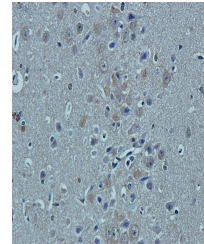


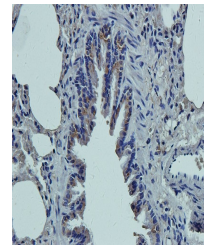
Product Datasheet

CCKN antibody (orb422563)

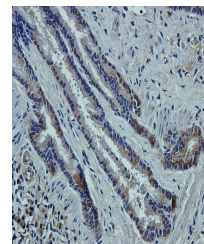
Description	CCKN antibody
Species/Host	Rabbit
Reactivity	Guinea pig, Human, Mouse, Rat
Conjugation	Unconjugated
Tested Applications	IHC-P, WB
Immunogen	KLH conjugated synthetic peptide derived from human CCKN. Please contact us for the exact immunogen sequence.
Target	CCKN
Form/Appearance	10 mM PBS, 0.02% sodium azide
Concentration	- 100 µg (in 200 µl): 0.5 mg/ml & - 200 µg (in 400 µl): 0.5 mg/ml
Storage	Store at 4°C for up to two weeks. For long term storage, aliquot and store at -20°C, avoid freeze/thaw cycles.
Note	For research use only
Isotype	IgG
Clonality	Polyclonal
Purity	Polyclonal antibodies are purified by peptide affinity chromatography
MW	12.6 kDa
Uniprot ID	P06307
Dilution Range	IHC-P: 1:100-600, WB: 1:100-800
Expiration Date	12 months from date of receipt.



IHC-P image of guinea pig brain tissue u...



IHC-P image of rat lung tissue using ant...



Immunohistochemical staining of rat lung...