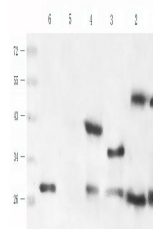


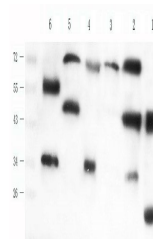
Product Datasheet

FGF13 antibody (orb422559)

Description	FGF13 antibody
Species/Host	Rabbit
Reactivity	Human, Mouse, Rat
Conjugation	Unconjugated
Tested Applications	WB
Immunogen	KLH conjugated synthetic peptide derived from human FGF13. Please contact us for the exact immunogen sequence.
Target	FGF13
Form/Appearance	10 mM PBS, 0.02% sodium azide
Concentration	- 100 µg (in 200 µl): 0.5 mg/ml- 200 µg (in 400 µl): 0.5 mg/ml
Storage	Store at 4°C for up to two weeks. For long term storage, aliquot and store at -20°C, avoid freeze/thaw cycles.
Note	For research use only
Isotype	IgG
Clonality	Polyclonal
Purity	Polyclonal antibodies are purified by peptide affinity chromatography
MW	27.5 kDa
Uniprot ID	Q92913
Dilution Range	WB: 1:200-1000
Expiration Date	12 months from date of receipt.



Western blot analysis of mouse brain (lane 1).



WB analysis of mouse brain (lane 1), rat...