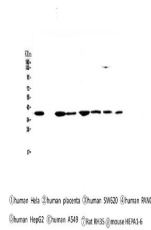


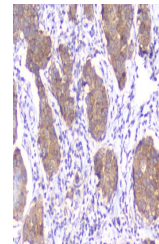
Product Datasheet

SMN1/2 Antibody (monoclonal, 2B10) (orb421125)

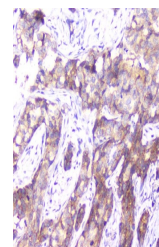
Description	SMN1/2 Antibody (monoclonal, 2B10)
Species/Host	Mouse
Reactivity	Human, Mouse, Rat
Conjugation	Unconjugated
Tested Applications	ICC, IHC, WB
Immunogen	A synthetic peptide corresponding to a sequence at the N-terminus of human SMN1/2 (22-52aa RRGTGQSDSDIWDTTALIKAYDKAVASFKH), identical to the related mouse and rat sequences.
Form/Appearance	Lyophilized
Concentration	Adding 0.2 ml of distilled water will yield a concentration of 500 µg/ml.
Storage	Store at -20°C for one year from date of receipt. After reconstitution, at 4°C for one month. It can also be aliquotted and stored frozen at -20°C for six months. Avoid repeated freeze-thaw cycles.
Note	For research use only
Application notes	Add 0.2ml of distilled water will yield a concentration of 500ug/ml.
Isotype	Mouse IgG1
Clonality	Monoclonal
MW	39 kDa
Uniprot ID	Q16637
Expiration Date	12 months from date of receipt.



WB analysis of SMN1/2 using anti-SMN1/2 ...



IHC analysis of SMN1/2 using anti-SMN1/2...



IHC analysis of SMN1/2 using anti-SMN1/2...