
Product Datasheet

Stefin B CSTB Antibody (monoclonal, 2B6) (orb421124)

Description

Stefin B CSTB Antibody (monoclonal, 2B6)


Species/Host

Mouse

Reactivity

Human

Conjugation

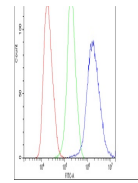
Unconjugated

Tested
Applications

FC, ICC, IHC, IHC-Fr, WB

Immunogen

E. coli-derived human Stefin B recombinant protein (Position: M1-F98). Human Stefin B shares 78.6 % amino acid (aa) sequence identity with both mouse and rat Stefin B.



Flow Cytometry analysis of PC-3 cells us...

Form/Appearance

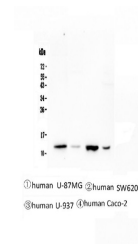
Lyophilized

Concentration

Adding 0.2 ml of distilled water will yield a concentration of 500 µg/ml.

Storage

Store at -20°C for one year from date of receipt. After reconstitution, at 4°C for one month. It can also be aliquotted and stored frozen at -20°C for six months. Avoid repeated freeze-thaw cycles.



WB analysis of Stefin B using anti-Stefi...

Note

For research use only

Application notes

Add 0.2ml of distilled water will yield a concentration of 500ug/ml.

Isotype

Mouse IgG1

Clonality

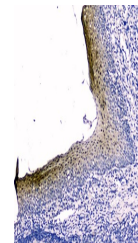
Monoclonal

MW

14 kDa

Uniprot ID
[P04080](https://www.uniprot.org/entry/P04080)
Expiration Date

12 months from date of receipt.



IHC analysis of Stefin B using anti-Stef...