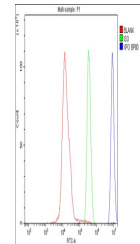


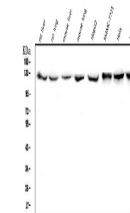
## Product Datasheet

# CRM1 XPO1 Antibody (monoclonal, 5G3) (orb421118)

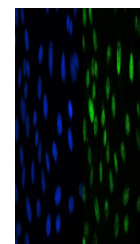
<b>Description</b>	CRM1 XPO1 Antibody (monoclonal, 5G3)
<b>Species/Host</b>	Mouse
<b>Reactivity</b>	Human, Mouse, Rat
<b>Conjugation</b>	Unconjugated
<b>Tested Applications</b>	FC, ICC, IF, IHC, WB
<b>Immunogen</b>	E.coli-derived human CRM1 recombinant protein (Position: N966-D1071). Human CRM1 shares 93.4% and 91.5% amino acid (aa) sequence identity with mouse and rat CRM1, respectively.
<b>Form/Appearance</b>	Lyophilized
<b>Concentration</b>	Adding 0.2 ml of distilled water will yield a concentration of 500 µg/ml.
<b>Storage</b>	Store at -20°C for one year from date of receipt. After reconstitution, at 4°C for one month. It can also be aliquotted and stored frozen at -20°C for six months. Avoid repeated freeze-thaw cycles.
<b>Note</b>	For research use only
<b>Application notes</b>	Add 0.2ml of distilled water will yield a concentration of 500ug/ml.
<b>Isotype</b>	Mouse IgG2b
<b>Clonality</b>	Monoclonal
<b>MW</b>	123 kDa
<b>Uniprot ID</b>	<a href="#">O14980</a>
<b>Expiration Date</b>	12 months from date of receipt.



Flow Cytometry analysis of SiHa cells us...



WB analysis of CRM1 using anti-CRM1 anti...



IF analysis of CRM1 using anti-CRM1 anti...