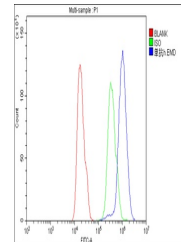


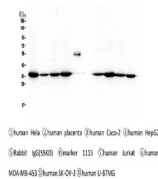
Product Datasheet

Emerin EMD Antibody (monoclonal, 5A10) (orb421117)

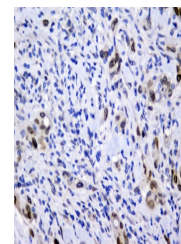
Description	Emerin EMD Antibody (monoclonal, 5A10)
Species/Host	Mouse
Reactivity	Human
Conjugation	Unconjugated
Tested Applications	FC, ICC, IHC, WB
Immunogen	A synthetic peptide corresponding to a sequence at the N-terminus of human Emerin (1-48aa MDNYADLSDELTLTLLRRYNIPHGPPVVGSTRRLYEKKIFEYETQRRRL), different from the related mouse sequence by eight amino acids, and from the related rat sequence by nine amino acids
Form/Appearance	Lyophilized
Concentration	Adding 0.2 ml of distilled water will yield a concentration of 500 µg/ml.
Storage	Store at -20°C for one year from date of receipt. After reconstitution, at 4°C for one month. It can also be aliquotted and stored frozen at -20°C for six months. Avoid repeated freeze-thaw cycles.
Note	For research use only
Application notes	Add 0.2ml of distilled water will yield a concentration of 500ug/ml.
Isotype	Mouse IgG1
Clonality	Monoclonal
MW	34 kDa
Uniprot ID	P50402
Expiration Date	12 months from date of receipt.



Flow Cytometry analysis of A431 cells us...



WB analysis of Emerin using anti-Emerin ...



IHC analysis of Emerin using anti-Emerin...