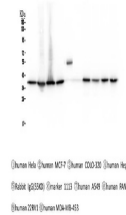


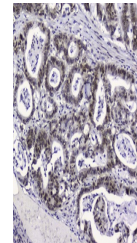
## Product Datasheet

# APE1 APEX1 Antibody (monoclonal, 5C11) (orb421116)

<b>Description</b>	APE1 APEX1 Antibody (monoclonal, 5C11)
<b>Species/Host</b>	Mouse
<b>Reactivity</b>	Human
<b>Conjugation</b>	Unconjugated
<b>Tested Applications</b>	FC, ICC, IHC, WB
<b>Immunogen</b>	E.coli-derived human APE1 recombinant protein (Position: P2-L318). Human APE1 shares 94% and 93% amino acid (aa) sequence identity with mouse and rat APE1, respectively.
<b>Form/Appearance</b>	Lyophilized
<b>Concentration</b>	Adding 0.2 ml of distilled water will yield a concentration of 500 µg/ml.
<b>Storage</b>	Store at -20°C for one year from date of receipt. After reconstitution, at 4°C for one month. It can also be aliquotted and stored frozen at -20°C for six months. Avoid repeated freeze-thaw cycles.
<b>Note</b>	For research use only
<b>Application notes</b>	Add 0.2ml of distilled water will yield a concentration of 500ug/ml.
<b>Isotype</b>	Mouse IgG2b
<b>Clonality</b>	Monoclonal
<b>MW</b>	39 kDa
<b>Uniprot ID</b>	<b>P27695</b>
<b>Expiration Date</b>	12 months from date of receipt.



WB analysis of APE1 using anti-APE1 anti...



IHC analysis of APE1 using anti-APE1 ant...