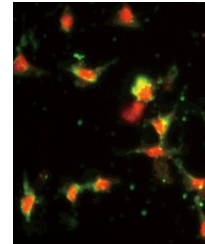


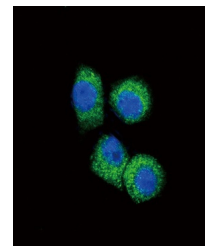
Product Datasheet

MCP1 antibody (orb420696)

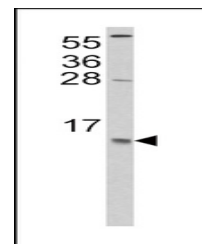
Description	Rabbit polyclonal antibody to MCP1
Species/Host	Rabbit
Reactivity	Human
Conjugation	Unconjugated
Tested Applications	FC, IF, IHC-P, WB
Immunogen	Synthetic Peptide
Target	CCL2
Form/Appearance	Purified polyclonal antibody supplied in PBS with 0.09% (W/V) sodium azide. This antibody is prepared by Saturated Ammonium Sulfate (SAS) precipitation followed by dialysis against PBS.
Storage	Maintain refrigerated at 2-8°C for up to 2 weeks. For long term storage store at -20°C in small aliquots to prevent freeze-thaw cycles
Note	For research use only
Isotype	Rabbit IgG
Clonality	Polyclonal
MW	11025
Uniprot ID	P13500
NCBI	NP_002973.1
Dilution Range	WB: 1:1000, IHC-P: 1:10-50, IF/ICC: 1:10-50, FACS: 1:10-50
Expiration Date	12 months from date of receipt.



Immunofluorescence analysis of CCL2 Antibody



Confocal immunofluorescent analysis of CCL2 Antibody



Western blot analysis of CCL2 Antibody