

---

## Product Datasheet

### Histone H3 K27me3 antibody (orb420432)

**Description**

Histone H3 K27me3 antibody

**Species/Host**

Rabbit

**Reactivity**

Human, Mouse, Rat

**Conjugation**

Unconjugated

**Tested Applications**

DOT, ELISA, IF, IP, WB

**Immunogen**

Histone H3 [Trimethyl Lys27] affinity purified antibody was prepared from whole rabbit serum produced by repeated immunizations with a synthetic peptide surrounding the K27me3 site of human Histone H3.

**Preservatives**

0.01% (w/v) Sodium Azide

**Form/Appearance**

Liquid (sterile filtered)

**Concentration**

0.93 mg/ml

**Storage**

Store vial at -20° C prior to opening. Aliquot contents and freeze at -20° C or below for extended storage. Avoid cycles of freezing and thawing. Centrifuge product if not completely clear after standing at room temperature. This product is stable for several weeks at 4° C as an undiluted liquid. Dilute only prior to immediate use.

**Note**

For research use only

**Application notes**

Anti-Histone H3 [Trimethyl Lys27] antibody is tested for Dot Blot, IF, and Western Blot. This antibody is useful for ELISA and immunocytochemistry. Specific conditions for reactivity should be optimized by the end user. Expect a band approximately ~15.4kDa corresponding to the appropriate cell lysate or extract. Epi-Plus antibody production in collaboration with Novus Biologicals.

**Isotype**

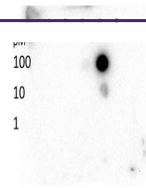
IgG

**Clonality**

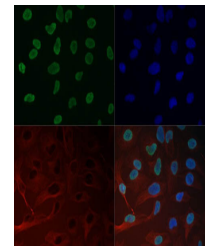
Polyclonal

**Purity**

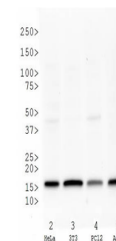
Anti-Histone H3 [Trimethyl Lys27] was affinity purified from monospecific antiserum by immunoaffinity chromatography. A BLAST analysis was used to suggest cross-reactivity with Human, mouse, rat, and C. elegans based on 100% sequence homology. Cross-reactivity with Histone H3 [Lys27 me3] from other sources has not been determined.



Dot Blot of Histone H3 K27 Me3 Antibody...



Immunofluorescence of Histone H3 K27me3 ...



Western Blot of Histone H3 K27me3 Antibo...