
Product Datasheet

Histone H3 R2me2s/K4me2 antibody (orb420412)

Description

Histone H3 R2me2s/K4me2 antibody

Species/Host

Rabbit

Reactivity

C. elegans, Human, Mouse

Conjugation

Unconjugated

Tested

ChIP, DOT, IF, IHC, Multiplex Assay, WB

Applications
Immunogen

Histone H3 [Sym-dimethyl Arg2, Dimethyl Lys4] affinity purified antibody was prepared from whole rabbit serum produced by repeated immunizations with synthetic dimethylated/dimethylated peptides surrounding Arginine 2 / Lysine 4 of human Histone H3.2.

Preservatives

0.01% (w/v) Sodium Azide

Form/Appearance

Liquid (sterile filtered)

Concentration

0.91 mg/ml

Storage

Store vial at -20° C prior to opening. Aliquot contents and freeze at -20° C or below for extended storage. Avoid cycles of freezing and thawing. Centrifuge product if not completely clear after standing at room temperature. This product is stable for several weeks at 4° C as an undiluted liquid. Dilute only prior to immediate use.

Note

For research use only

Application notes

Anti-Histone H3 [Sym-dimethyl Arg2, Dimethyl Lys4] antibody is tested for Western Blot, Chromatin Immunoprecipitation, Dot Blot, and Immunofluorescence. Specific conditions for reactivity should be optimized by the end user. Expect a band approximately ~15.4 kDa corresponding to Histone H3 protein by Western Blotting in HeLa histone prep lysate or the appropriate cell lysate or extract. Epi-Plus antibody production in collaboration with Novus Biologicals.

Isotype

IgG

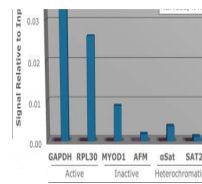
Clonality

Polyclonal

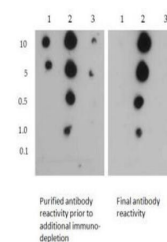
Purity

Anti-Histone H3 [Sym-dimethyl Arg2, Dimethyl Lys4] was affinity purified from monospecific antiserum by immunoaffinity chromatography. This antibody reacts with human Histone H3.2. A BLAST analysis was used to suggest cross-

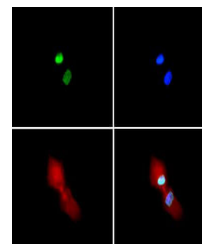
ChIP: Histone H3 R2Me2s/K4Me2



Chromatin Immunoprecipitation of Rabbit ...



Dot Blot of Rabbit Histone H3 [Sym-dimet...



Immunofluorescence of Rabbit Anti-Histon...