

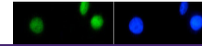
---

## Product Datasheet

### Histone H3 K4me1 antibody (orb420384)

**Description**

Histone H3 K4me1 antibody


**Species/Host**

Rabbit

**Reactivity**

C. elegans, Human

**Conjugation**

Unconjugated

**Tested**

ChIP, IF, IHC, Multiplex Assay, WB

**Applications**
**Immunogen**

Histone H3 [Monomethyl Lys4] affinity purified antibody was prepared from whole rabbit serum produced by repeated immunizations with a synthetic monomethylated peptide surrounding Lysine 4 of human Histone H3.2.

**Preservatives**

0.01% (w/v) Sodium Azide

**Form/Appearance**

Liquid (sterile filtered)

**Concentration**

0.72 mg/ml

**Storage**

Store vial at -20° C prior to opening. Aliquot contents and freeze at -20° C or below for extended storage. Avoid cycles of freezing and thawing. Centrifuge product if not completely clear after standing at room temperature. This product is stable for several weeks at 4° C as an undiluted liquid. Dilute only prior to immediate use.

**Note**

For research use only

**Application notes**

Anti-Histone H3 [Monomethyl Lys4] antibody is tested in Western Blot and Immunofluorescence. This antibody is useful in Immunocytochemistry, Chromatin Immunoprecipitation, and Dot Blot. Specific conditions for reactivity should be optimized by the end user. Expect a band approximately ~15.4 kDa corresponding to Histone H3 protein by Western Blotting in HeLa histone prep lysate or the appropriate cell lysate or extract. Epi-Plus antibody production in collaboration with Novus Biologicals.

**Isotype**

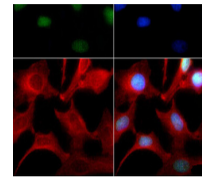
IgG

**Clonality**

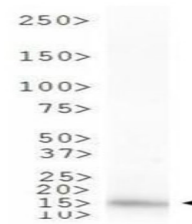
Polyclonal

**Purity**

Anti-Histone H3 [Monomethyl Lys4] was affinity purified from monospecific antiserum by immunoaffinity chromatography. This antibody reacts with human Histone H3.2. A BLAST analysis was used to suggest cross-reactivity with Human, mouse, and C. elegans. Predicted to react with



Immunocytochemistry of Rabbit Anti-Histo...



Western Blot of Rabbit Anti-Histone H3 [...]



Western Blot of Rabbit Anti-Histone H3 [...]