
Product Datasheet

Retinoblastoma K860 Me1 antibody (orb420378)

Description

Retinoblastoma K860 Me1 antibody

Species/Host

Rabbit

Reactivity

Human

Conjugation

Unconjugated

Tested Applications

DOT, ELISA, WB

Immunogen

Anti-Retinoblastoma [Monomethyl Lys860] Antibody was prepared from whole rabbit serum produced by repeated immunizations with a methylated and acetylated synthetic peptide surrounding lysine 860 of human RB1 conjugated to Keyhole Limpet Hemocyanin (KLH).

Preservatives

0.01% (w/v) Sodium Azide

Form/Appearance

Liquid (sterile filtered)

Concentration

0.99 mg/ml

Storage

Store vial at -20° C or below prior to opening. This vial contains a relatively low volume of reagent (25 µL). To minimize loss of volume dilute 1:10 by adding 225 µL of the buffer stated above directly to the vial. Recap, mix thoroughly and briefly centrifuge to collect the volume at the bottom of the vial. Use this intermediate dilution when calculating final dilutions as recommended below. Store the vial at -20°C or below after dilution. Avoid cycles of freezing and thawing.

Note

For research use only

Application notes

Anti-Retinoblastoma K860 Me1 Antibody was tested for use in ELISA, Dot Blot, and Western Blot. Expect a band at approximately 106.1kDa in appropriate cell lysates or tissues. Although not tested, expect reactivity in immunoprecipitation and immunohistochemistry.

Isotype

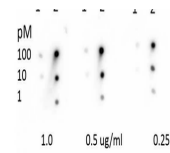
IgG

Clonality

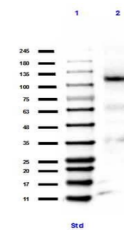
Polyclonal

Purity

This affinity purified antibody is directed against human Retinoblastoma. This product was affinity purified from monospecific antiserum by immunoaffinity purification. This antibody reacts with human RB1 surrounding aa860 and is specific for K860 Me1. Blast analysis of the sequence of the immunogen shows 100% identity with human and 92% identity to rat and mouse.



Dot Blot of Rabbit Anti-Retinoblastoma [...]



Western Blot of Rabbit anti-Retinoblasto...