

---

## Product Datasheet

### GAPDH antibody (orb420356)

**Description**

GAPDH antibody

**Species/Host**

Rabbit

**Reactivity**

Human, Mouse

**Conjugation**

Unconjugated

**Tested**

ELISA, WB

**Applications**
**Immunogen**

GAPDH Antibody was prepared from whole rabbit serum produced by repeated immunizations with a synthetic peptide corresponding to a region near the N-terminus of human Glyceraldehyde-3-Phosphate Dehydrogenase (GAPDH).

**Preservatives**

0.01% (w/v) Sodium Azide

**Form/Appearance**

Liquid (sterile filtered)

**Concentration**

1.17 mg/mL

**Storage**

Store vial at -20° C or below prior to opening. This vial contains a relatively low volume of reagent (25 µL). To minimize loss of volume dilute 1:10 by adding 225 µL of the buffer stated above directly to the vial. Recap, mix thoroughly and briefly centrifuge to collect the volume at the bottom of the vial. Use this intermediate dilution when calculating final dilutions as recommended below. Store the vial at -20°C or below after dilution. Avoid cycles of freezing and thawing.

**Note**

For research use only

**Application notes**

Anti-GAPDH Antibody has been tested for use in ELISA and western blotting. Specific conditions for reactivity should be optimized by the end user. Expect a band at ~36 kDa in size corresponding to GAPDH by western blotting in the appropriate cell lysate or extract. GAPDH is constitutively expressed at high levels in almost all tissues and cell lines, making it ideal for use as a loading control marker. This Anti-GAPDH Antibody product is a new product replacing p/n 600-401-A33S.

**Isotype**

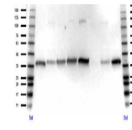
IgG

**Clonality**

Polyclonal

**Purity**

Anti-GAPDH Antibody is directed against human GAPDH protein. The product was affinity purified from monospecific antiserum by immunoaffinity chromatography. A BLAST analysis was used to suggest that this antibody would react with GAPDH from a wide range of organisms, including most vertebrates and some yeast. Broad reactivity makes this antibody an excellent



Western Blot of Rabbit anti-GAPDH antibo...