
Product Datasheet

GAPDH antibody (orb420355)

Description

GAPDH antibody

Species/Host

Rabbit

Reactivity

Human, Mouse

Conjugation

Unconjugated

Tested

ELISA, WB

Applications
Immunogen

GAPDH Antibody was prepared from whole rabbit serum produced by repeated immunizations with a synthetic peptide corresponding to a region near the N-terminus of human Glyceraldehyde-3-Phosphate Dehydrogenase (GAPDH).

Preservatives

0.01% (w/v) Sodium Azide

Form/Appearance

Liquid (sterile filtered)

Concentration

1.17 mg/ml

Storage

Store Anti-GAPDH antibody at -20° C prior to opening. Aliquot contents and freeze at -20° C or below for extended storage. Avoid cycles of freezing and thawing. Centrifuge product if not completely clear after standing at room temperature. This product is stable for several weeks at 4° C as an undiluted liquid. Dilute only prior to immediate use.

Note

For research use only

Application notes

Anti-GAPDH Antibody has been tested for use in ELISA and western blotting. Specific conditions for reactivity should be optimized by the end user. Expect a band at ~36 kDa in size corresponding to GAPDH by western blotting in the appropriate cell lysate or extract. GAPDH is constitutively expressed at high levels in almost all tissues and cell lines, making it ideal for use as a loading control marker. This Anti-GAPDH Antibody product is a new product replacing p/n 600-401-A33.

Isotype

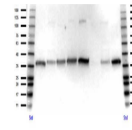
IgG

Clonality

Polyclonal

Purity

Anti-GAPDH Antibody is directed against human GAPDH protein. The product was affinity purified from monospecific antiserum by immunoaffinity chromatography. A BLAST analysis was used to suggest that this antibody would react with GAPDH from a wide range of organisms, including most vertebrates and some yeast. Broad reactivity makes this antibody an excellent loading control.



Western Blot of Rabbit anti-GAPDH antibo...