

## Product Datasheet

### Abi1 antibody (orb420347)

**Description**

Abi1 antibody

**Species/Host**

Rabbit

**Reactivity**

Human, Mouse, Rat

**Conjugation**

Unconjugated

**Tested Applications**

ELISA, WB

**Immunogen**

This affinity purified antibody was prepared from whole rabbit serum produced by repeated immunizations with a synthetic peptide corresponding to near c-terminal of the mouse Abi-1 protein.

**Preservatives**

0.01% (w/v) Sodium Azide

**Form/Appearance**

Liquid (sterile filtered)

**Concentration**

1.07 mg/ml

**Storage**

Store vial at -20° C prior to opening. Aliquot contents and freeze at -20° C or below for extended storage. Avoid cycles of freezing and thawing. Centrifuge product if not completely clear after standing at room temperature. This product is stable for several weeks at 4° C as an undiluted liquid. Dilute only prior to immediate use.

**Note**

For research use only

**Application notes**

This affinity purified antibody has been tested for use in ELISA and western blot. Specific conditions for reactivity should be optimized by the end user. Expect a band ~ 65 kDa in size corresponding to Abi1 by western blotting in the appropriate cell lysate or extract.

**Isotype**

IgG

**Clonality**

Polyclonal

**Purity**

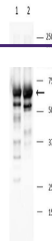
Anti-Abi1 is directed against mouse Abi1. This product is an affinity purified antibody produced by immunoaffinity chromatography using peptide coupled to agarose beads. A BLAST analysis was used to suggest cross reactivity with this protein in human and rat based on 100% homology for the immunogen sequence. Reactivity against homologues from other sources is not known.

**Uniprot ID**
[Q8CBW3](#)
**NCBI**
[NP\\_001070658.1](#)
**Dilution Range**

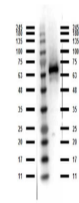
ELISA: 5.0 µg/ml, WB: 1.0 ug/ml

**Expiration Date**

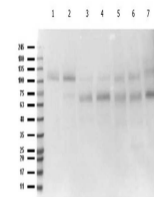
12 months from date of receipt.



Western Blot of Rabbit anti-Abi1 antibody...



Western Blot of Rabbit anti-Abi1 antibody...



Western Blot of Rabbit anti-Abi1 antibody...