

---

## Product Datasheet

### Orf2 antibody (orb420344)

**Description**

Orf2 antibody

**Species/Host**

Rabbit

**Reactivity**

Mouse

**Conjugation**

Unconjugated

**Tested**

ELISA, WB

**Applications**
**Immunogen**

Affinity purified Anti-ORF2 antibody was prepared from whole rabbit serum produced by repeated immunizations with a synthetic peptide near the c-terminus of mouse ORF2 protein.

**Preservatives**

0.01% (w/v) Sodium Azide

**Form/Appearance**

Liquid (sterile filtered)

**Concentration**

1.07 mg/mL

**Storage**

Store vial at -20° C or below prior to opening. This vial contains a relatively low volume of reagent (25 µL). To minimize loss of volume dilute 1:10 by adding 225 µL of the buffer stated above directly to the vial. Recap, mix thoroughly and briefly centrifuge to collect the volume at the bottom of the vial. Use this intermediate dilution when calculating final dilutions as recommended below. Store the vial at -20°C or below after dilution. Avoid cycles of freezing and thawing.

**Note**

For research use only

**Application notes**

This affinity purified antibody has been tested for use in ELISA and Western Blot. Specific conditions for reactivity should be optimized by the end user. Expect a band ~150 kDa in size corresponding to Orf2 by western blotting in the liver cell lysates or extract.

**Isotype**

IgG

**Clonality**

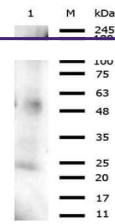
Polyclonal

**Purity**

Anti-Orf2 is directed against mouse ORF2 near a c-terminus position. This product is an affinity purified antibody produced by immunoaffinity chromatography using peptide coupled to agarose beads. A BLAST analysis was used to suggest reactivity with this protein from human and feline based on 100% homology for the immunogen sequence.

**Uniprot ID**

2731767

**NCBI**
[AAC53542.1](#)


Western Blot  
of Rabbit  
Anti-Orf2  
antibod...