
Product Datasheet

JAM A pY280 antibody (orb420323)

Description

JAM A pY280 antibody

Species/Host

Rabbit

Reactivity

Human

Conjugation

Unconjugated

Tested Applications

ELISA, IF, WB

Immunogen

Affinity purified Anti-JAM A pY280 antibody was prepared from whole rabbit serum produced by repeated immunizations with a synthetic peptide corresponding to the c-term and phosphorylated at the tyrosine 280 position of Human JAM A protein.

Preservatives

0.01% (w/v) Sodium Azide

Form/Appearance

Liquid (sterile filtered)

Concentration

1.0 mg/ml

Storage

Store vial at -20° C or below prior to opening. This vial contains a relatively low volume of reagent (25 µL). To minimize loss of volume dilute 1:10 by adding 225 µL of the buffer stated above directly to the vial. Recap, mix thoroughly and briefly centrifuge to collect the volume at the bottom of the vial. Use this intermediate dilution when calculating final dilutions as recommended below. Store the vial at -20°C or below after dilution. Avoid cycles of freezing and thawing.

Note

For research use only

Application notes

This affinity purified antibody has been tested for use in ELISA, IF, and western blot. Specific conditions for reactivity should be optimized by the end user. Expect a band ~ 32.5 kDa in size corresponding to JAM A by western blotting in the appropriate cell lysate or extract.

Isotype

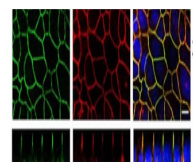
IgG

Clonality

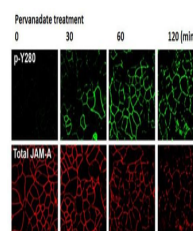
Polyclonal

Purity

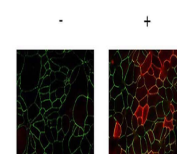
Anti-JAM A pY280 is directed against human JAM A phosphorylated at the tyrosine 280 position. This product is an affinity purified antibody produced by immunoaffinity chromatography using phospho peptide coupled to agarose beads followed by solid phase adsorption(s) against non-phospho peptide to remove any unwanted reactivities. A BLAST analysis was used to suggest reactivity with this protein from human and feline based on 100%

Confocal Immunofluorescence Microscopy o...



Confocal Immunofluorescence Microscopy o...



Immunofluorescence Microscopy of Rabbit ...