

---

## Product Datasheet

### Cas 9 antibody (orb420317)

**Description**

Cas 9 antibody

**Species/Host**

Rabbit

**Reactivity**

Bacteria

**Conjugation**

Unconjugated

**Tested**

ELISA, IF, Multiplex Assay, WB

**Applications**
**Immunogen**

Cas-9 affinity purified antibody was prepared from whole rabbit serum produced by repeated immunizations with a synthetic peptide corresponding to a region near the C-terminal of *Streptococcus pyogenes* Cas-9 protein.

**Preservatives**

0.01% (w/v) Sodium Azide

**Form/Appearance**

Liquid (sterile filtered)

**Concentration**

1.0 mg/mL

**Storage**

Store vial at -20° C or below prior to opening. This vial contains a relatively low volume of reagent (25 µL). To minimize loss of volume dilute 1:10 by adding 225 µL of the buffer stated above directly to the vial. Recap, mix thoroughly and briefly centrifuge to collect the volume at the bottom of the vial. Use this intermediate dilution when calculating final dilutions as recommended below. Store the vial at -20°C or below after dilution. Avoid cycles of freezing and thawing.

**Note**

For research use only

**Application notes**

This affinity purified antibody has been tested for use in ELISA, Immunofluorescence, and Western blotting. Specific conditions for reactivity should be optimized by the end user. Expect a band ~158 kDa in size corresponding to Cas-9 protein by western blotting in the appropriate cell lysate or extract.

**Isotype**

IgG

**Clonality**

Polyclonal

**Purity**

Anti-Cas9 antibody is directed against *Streptococcus pyogenes* Cas-9. The product was affinity purified from monospecific antiserum by immunoaffinity chromatography.

**Uniprot ID**
[Q99ZW2](#)
**NCBI**
[NP\\_269215.1](#)
**Dilution Range**

ELISA: 1:25,000-1:30,000, IF: 1µg/mL, WB: 1µg/mL

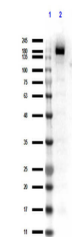


Immunofluorescence of Rabbit Anti-Cas9

A...



Western Blot of Rabbit Anti-Cas9 Antibod...



Western Blot results of Rabbit Anti-Cas ...