

---

## Product Datasheet

### Lysine Acetylated antibody (orb420311)

**Description**

Lysine Acetylated antibody

**Species/Host**

Rabbit

**Conjugation**

Unconjugated

**Tested Applications**

ELISA, FC, IF, IHC, IP, WB

**Immunogen**

Anti-Lysine Acetylated Antibody was prepared from whole rabbit serum produced by repeated immunizations with acetylated lysine conjugated KLH.

**Preservatives**

None

**Form/Appearance**

Liquid (sterile filtered)

**Concentration**

1.0 mg/ml

**Storage**

Store vial at -20° C prior to opening. Aliquot contents and freeze at -20° C or below for extended storage. Avoid cycles of freezing and thawing. Centrifuge product if not completely clear after standing at room temperature. This product is stable for several weeks at 4° C as an undiluted liquid. Dilute only prior to immediate use.

**Note**

For research use only

**Application notes**

Anti-Lysine Acetylated Antibody is suitable for use in ELISA, western blotting, immunofluorescence microscopy, and immunoprecipitation assays. Although not tested, this antibody is likely functional in RIA, flow cytometry, and immunohistochemistry.

**Isotype**

IgG

**Clonality**

Polyclonal

**Purity**

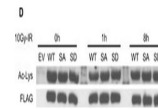
Anti-Lysine Acetylated Antibody was prepared from monospecific antiserum by immunoaffinity chromatography using acetylated lysine peptide coupled to agarose. Assay by immunoelectrophoresis resulted in a single precipitin arc against anti-Rabbit IgG. The antibody reacts specifically with acetylated lysine residues.

**Dilution Range**

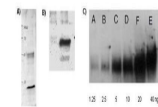
ELISA: 1:1,000-1:2,500, FC: User Optimized, IHC: User Optimized, IF: User Optimized, IP: 10 µg/mg protein sample, WB: 1:500-1:1,000

**Expiration Date**

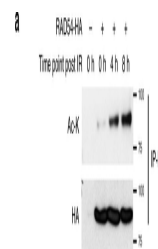
12 months from date of receipt.



Acetylation does not crosstalk with IR-i...



Biorbyt's Affinity Purified anti-Acetyla...



RAD54 acetylation is important for BRD9 ...