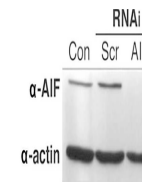

Product Datasheet

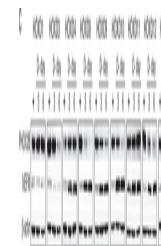
beta Actin antibody (orb420310)

Description	beta Actin antibody
Species/Host	Rabbit
Reactivity	Frog, Human, Mouse
Conjugation	Unconjugated
Tested Applications	ELISA, IF, WB
Immunogen	beta-Actin Loading Control Antibody was prepared from whole rabbit serum produced by repeated immunizations with a synthetic peptide corresponding to a C-Terminal region near amino acids 350-375 of Human beta Actin.
Preservatives	0.01% (w/v) Sodium Azide
Form/Appearance	Liquid (sterile filtered)
Concentration	1.0 mg/ml
Storage	Store vial at -20° C or below prior to opening. This vial contains a relatively low volume of reagent (25 µL). To minimize loss of volume dilute 1:10 by adding 225 µL of the buffer stated above directly to the vial. Recap, mix thoroughly and briefly centrifuge to collect the volume at the bottom of the vial. Use this intermediate dilution when calculating final dilutions as recommended below. Store the vial at -20°C or below after dilution. Avoid cycles of freezing and thawing.
Note	For research use only
Application notes	Anti-beta Actin Antibody has been tested for use in ELISA, immunofluorescence, and western blot. Specific conditions for reactivity should be optimized by the end user. Beta actin present in fibroblast connective tissue stains very brightly. Beta actin present in neuromuscular junctions also stains. Paraformaldehyde fixation yields brighter staining than formalin or methanol fixation. Expect a band at ~42 kDa in size corresponding to beta actin by western blotting in the appropriate cell lysate or extract.
Isotype	IgG
Clonality	Polyclonal
Purity	Anti-beta-Actin Loading Control Antibody reacts with Human, Rat, Monkey and Mouse. beta-Actin Loading Control Antibody is expected to cross-react with a wide range of species due to sequence homology. Anti-Beta Actin is affinity-purified antibody is directed against human beta Actin protein. A BLAST analysis was used to suggest that this antibody would react with beta Actin

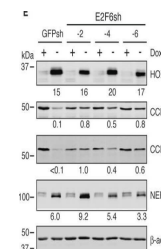
A AIF



Analysis of poly(ADP-ribose)-mediated ca...



Distinct functions of HOXD proteins in r...



E2F6 is essential for HOXC9 induction of...