
Product Datasheet

AKT (phospho-T308) antibody (orb420308)

Description

AKT (phospho-T308) antibody

Species/Host

Rabbit

Reactivity

Human, Mouse, Rat

Conjugation

Unconjugated

Tested

DOT, ELISA, FC, IHC, WB

Applications
Immunogen

Anti-AKT pT308 polyclonal antibody was produced by repeated immunizations with a phosphorylated synthetic peptide corresponding to residues surrounding threonine 308 of human AKT1 protein.

Preservatives

0.01% (w/v) Sodium Azide

Form/Appearance

Liquid (sterile filtered)

Concentration

1.0 mg/mL

Storage

Store vial at -20° C or below prior to opening. This vial contains a relatively low volume of reagent (25 µL). To minimize loss of volume dilute 1:10 by adding 225 µL of the buffer stated above directly to the vial. Recap, mix thoroughly and briefly centrifuge to collect the volume at the bottom of the vial. Use this intermediate dilution when calculating final dilutions as recommended below. Store the vial at -20°C or below after dilution. Avoid cycles of freezing and thawing.

Note

For research use only

Application notes

AKT antibody is phospho specific for pT308 and is tested for western blotting, immunohistochemistry, dot blot, and ELISA. This antibody is suitable for Flow Cytometry.

Isotype

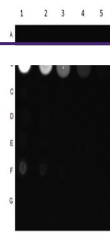
IgG

Clonality

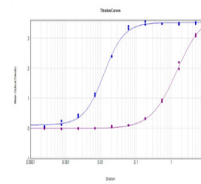
Polyclonal

Purity

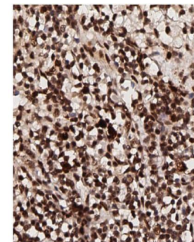
AKT phospho T308 Antibody was prepared from monospecific antiserum by immunoaffinity chromatography using phospho peptide coupled to agarose beads followed by solid phase adsorption(s) against non-phospho peptide and non-specific peptide to remove any unwanted reactivities. Assay by immunoelectrophoresis resulted in a single precipitin arc against anti-Rabbit Serum. This antibody is specific for phosphorylated human AKT. Minimal reactivity occurs against non-phosphorylated AKT



Dot Blot of Rabbit Anti-AKT pT308 Antibo...



ELISA Results of Rabbit Anti-AKT pT308 A...



Immunohistochemistry of Rabbit Anti-AKT ...