

## Product Datasheet

### Phosphoserine antibody (orb420304)

**Description**

Phosphoserine antibody

**Species/Host**

Rabbit

**Reactivity**

Mouse

**Conjugation**

Unconjugated

**Tested**

ELISA, IHC, IP, WB

**Applications**
**Immunogen**

Phosphoserine Antibody was prepared from whole rabbit serum produced by repeated immunizations with phosphoserine conjugated KLH.

**Preservatives**

None

**Form/Appearance**

Liquid (sterile filtered)

**Concentration**

0.25 mg/mL

**Storage**

Store vial at -20° C prior to opening. Aliquot contents and freeze at -20° C or below for extended storage. Avoid cycles of freezing and thawing. Centrifuge product if not completely clear after standing at room temperature. This product is stable for several weeks at 4° C as an undiluted liquid. Dilute only prior to immediate use.

**Note**

For research use only

**Application notes**

Phosphoserine Antibody is tested for use in ELISA, western blotting, Immunohistochemistry, and immunoprecipitation assays. The antibody reacts specifically with phosphoserine and shows minimal reactivity by ELISA and western blotting with proteins containing phosphotyrosine or phosphothreonine residues. The antibody reacts with free phosphoserine, phosphoserine conjugated to carriers such as thyroglobulin or BSA, and detects the presence of phosphoserine in proteins of both unstimulated and stimulated cell lysates. Although not tested, this antibody is likely functional in RIA and flow cytometry.

**Isotype**

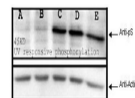
IgG

**Clonality**

Polyclonal

**Purity**

Anti-Phosphoserine Antibody was prepared from monospecific antiserum by immunoaffinity chromatography using phosphorylated serine peptide coupled to agarose. Assay by immunoelectrophoresis resulted in a single precipitin arc against anti-Rabbit IgG. Reactivity is specific for phosphoserine and minimal cross-reactivity is observed against phosphotyrosine or phosphothreonine.



Biorbyt's  
Affinity  
Purified anti-  
phospho...