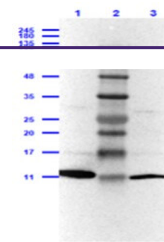

Product Datasheet

Leptin antibody (orb420298)

Description	Leptin antibody
Species/Host	Rabbit
Reactivity	Human, Mouse
Conjugation	Unconjugated
Tested Applications	ELISA, IHC, WB
Immunogen	Anti-Leptin antibody was prepared by repeated immunizations with recombinant mouse leptin 16,000 MW produced in E. coli.
Preservatives	0.01% (w/v) Sodium Azide
Form/Appearance	Liquid (sterile filtered)
Concentration	1.0 mg/mL
Storage	Store vial at -20° C or below prior to opening. This vial contains a relatively low volume of reagent (25 µL). To minimize loss of volume dilute 1:10 by adding 225 µL of the buffer stated above directly to the vial. Recap, mix thoroughly and briefly centrifuge to collect the volume at the bottom of the vial. Use this intermediate dilution when calculating final dilutions as recommended below. Store the vial at -20°C or below after dilution. Avoid cycles of freezing and thawing.
Note	For research use only
Application notes	This IgG fraction of anti-Mouse Leptin was tested for use in ELISA and immunoblotting. Reactivity in other immunoassays is unknown. The antibody will recognize recombinant and native 16 kDa leptin from mouse and human.
Isotype	IgG
Clonality	Polyclonal
Purity	Anti-Leptin antibody is an IgG fraction antibody purified from monospecific antiserum by a multi-step process which includes delipidation, salt fractionation and ion exchange chromatography followed by extensive dialysis against the buffer stated above. The antibody will recognize leptin from mouse and human. Reactivity with leptin from other sources is unknown.
Uniprot ID	P41160
NCBI	P41160.1
Dilution Range	ELISA: 1:5,000 - 1:20,000, IHC: User Optimized, WB: 1:500



Western Blot Results of Rabbit Anti-Lept...