

---

## Product Datasheet

### Leptin antibody (orb420297)

**Description**

Leptin antibody

**Species/Host**

Rabbit

**Reactivity**

Human, Mouse

**Conjugation**

Unconjugated

**Tested**

ELISA, IHC, WB

**Applications**
**Immunogen**

Anti-Leptin antibody was prepared by repeated immunizations with recombinant mouse leptin 16,000 MW produced in E. coli.

**Preservatives**

0.01% (w/v) Sodium Azide

**Form/Appearance**

Liquid (sterile filtered)

**Concentration**

1 mg/mL

**Storage**

Store vial at -20° C prior to opening. Aliquot contents and freeze at -20° C or below for extended storage. Avoid cycles of freezing and thawing. Centrifuge product if not completely clear after standing at room temperature. This product is stable for several weeks at 4° C as an undiluted liquid. Dilute only prior to immediate use.

**Note**

For research use only

**Application notes**

This IgG fraction of anti-Mouse Leptin was tested for use in ELISA and immunoblotting. Reactivity in other immunoassays is unknown. The antibody will recognize recombinant and native 16 kDa leptin from mouse and human.

**Isotype**

IgG

**Clonality**

Polyclonal

**Purity**

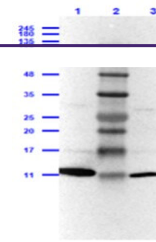
Anti-Leptin antibody is an IgG fraction antibody purified from monospecific antiserum by a multi-step process which includes delipidation, salt fractionation and ion exchange chromatography followed by extensive dialysis against the buffer stated above. The antibody will recognize leptin from mouse and human. Reactivity with leptin from other sources is unknown.

**Uniprot ID**
[P41160](#)
**NCBI**
[P41160.1](#)
**Dilution Range**

ELISA: 1:5,000 - 1:20,000, IHC: User Optimized, WB: 1:500 - 1:2,000

**Expiration Date**

12 months from date of receipt.



Western Blot  
Results of  
Rabbit Anti-  
Lept...