

## Product Datasheet

### IL1 alpha antibody (orb420288)

**Description**

IL1 alpha antibody

**Species/Host**

Rabbit

**Reactivity**

Human

**Conjugation**

Unconjugated

**Tested**

ELISA, IHC, WB

**Applications**
**Immunogen**

The whole rabbit serum used to produce this IgG fraction antibody was prepared by repeated immunizations with recombinant human IL-1a produced in E.coli. The MW of the recombinant IL-1a was 17,000. This is the cleavage site generated by the IL-1b converting enzyme (ICE, capase-1).

**Preservatives**

0.01% (w/v) Sodium Azide

**Form/Appearance**

Liquid (sterile filtered)

**Concentration**

1 mg/ml

**Storage**

Store vial at -20° C or below prior to opening. This vial contains a relatively low volume of reagent (25 µL). To minimize loss of volume dilute 1:10 by adding 225 µL of the buffer stated above directly to the vial. Recap, mix thoroughly and briefly centrifuge to collect the volume at the bottom of the vial. Use this intermediate dilution when calculating final dilutions as recommended below. Store the vial at -20°C or below after dilution. Avoid cycles of freezing and thawing.

**Note**

For research use only

**Application notes**

This IgG fraction antibody of anti-Human IL-1a has been tested for use in immunoblotting. This antibody is suitable for use in ELISA, neutralizations, immunohistochemistry, and flow cytometry. It recognizes the 17,000 MW mature IL-1a. Reactivity in other immunoassays is unknown.

**Isotype**

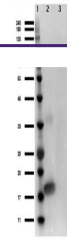
IgG

**Clonality**

Polyclonal

**Purity**

This is an IgG preparation of whole rabbit serum purified by DEAE fractionation. This antibody is primarily directed against the 17,000 MW human IL-1a and is useful in determining its presence in various assays. In general, this antibody also detects primate IL-1a in the same formats using similar dilutions. The antiserum does not recognize human IL-1b or Mouse or Rabbit IL-1a. In ELISA formats and other immunoreactive assays, this antibody will recognize both the mature 17,000 MW IL-1a as well as the 31,000 MW IL-1a precursor in either non-denatured



Western Blot  
of Rabbit  
Anti-Human  
IL-1 a...