

---

## Product Datasheet

### PARP1 antibody (orb420277)

**Description**

PARP1 antibody

**Species/Host**

Rabbit

**Reactivity**

Human

**Conjugation**

Unconjugated

**Tested Applications**

2D-PAGE, IHC, WB

**Immunogen**

PARP1 (N-term ZF1) purified antibody was prepared from whole rabbit serum produced by repeated immunizations with n-terminus region of human PARP1 zinc finger domain recombinant protein.

**Preservatives**

0.01% (w/v) Sodium Azide

**Form/Appearance**

Liquid (sterile filtered)

**Concentration**

1.0 mg/ml

**Storage**

Store vial at -20° C or below prior to opening. This vial contains a relatively low volume of reagent (25 µL). To minimize loss of volume dilute 1:10 by adding 225 µL of the buffer stated above directly to the vial. Recap, mix thoroughly and briefly centrifuge to collect the volume at the bottom of the vial. Use this intermediate dilution when calculating final dilutions as recommended below. Store the vial at -20°C or below after dilution. Avoid cycles of freezing and thawing.

**Note**

For research use only

**Application notes**

Anti-PARP1 (N-term ZF1) antibody has been validated by western blotting, IHC, and nanoimmunoassay (NIA). Specific conditions for reactivity should be optimized by the end user. Expect a band approximately 113 kDa in size corresponding to PARP-1 by western blotting in the appropriate cell lysate or extract.

**Isotype**

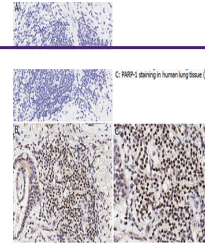
IgG

**Clonality**

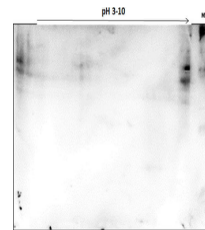
Polyclonal

**Purity**

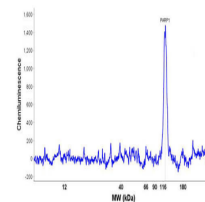
PARP1 (N-term ZF1) was purified from monospecific antiserum by immunoaffinity chromatography using protein A coupled to agarose beads. This antibody is specific for human PARP1 protein. No cross reactivity detected towards other PARP members when using siRNAs against 18 PARP family members. Cross-reactivity with PARP1 from other sources has not been determined.



Immunohistochemistry with anti-PARP-1 an...



OVCAR-8 Wild Type Lysate was separated O...



Peggy Sue™ Size Separation Electropher...