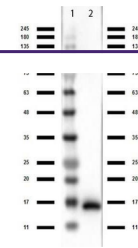
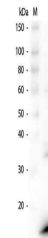

Product Datasheet

VhH antibody (orb420273)

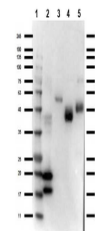
Description	VhH antibody
Species/Host	Rabbit
Reactivity	Camelus
Conjugation	Unconjugated
Tested Applications	ELISA, WB
Immunogen	This antibody was prepared from whole rabbit serum produced by repeated immunizations with a VhH camelid domain protein.
Preservatives	0.01% (w/v) Sodium Azide
Form/Appearance	Liquid (sterile filtered)
Concentration	1.3 mg/mL
Storage	Store vial at -20° C or below prior to opening. This vial contains a relatively low volume of reagent (25 µL). To minimize loss of volume dilute 1:10 by adding 225 µL of the buffer stated above directly to the vial. Recap, mix thoroughly and briefly centrifuge to collect the volume at the bottom of the vial. Use this intermediate dilution when calculating final dilutions as recommended below. Store the vial at -20°C or below after dilution. Avoid cycles of freezing and thawing.
Note	For research use only
Application notes	Anti-VhH antibody has been tested by ELISA and Western Blot. Specific conditions for reactivity should be optimized by the end user. Some cross-reactivity to E.coli proteins may be observed.
Isotype	IgG
Clonality	Polyclonal
Purity	Anti-VhH is directed against the llama VhH protein fragment. The product was purified from monospecific antiserum by protein A chromatography. Anti-Vhh antibody detects recombinant VhH proteins, native Llama IgG2 and native Llama IgG3.
Dilution Range	ELISA: 1:10,000-1:50,000, WB: 1:1,000-1:5,000
Expiration Date	12 months from date of receipt.



Western Blot of Rabbit Anti-VhH Antibody...



Western Blot of Rabbit anti-VhH Antibody...



Western Blot of Rabbit anti-VhH antibody...