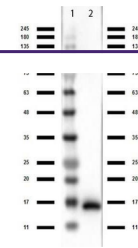
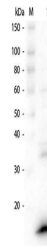

Product Datasheet

VhH antibody (orb420272)

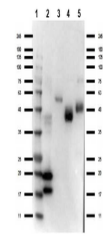
Description	VhH antibody
Species/Host	Rabbit
Reactivity	Camelus
Conjugation	Unconjugated
Tested Applications	ELISA, WB
Immunogen	This antibody was prepared from whole rabbit serum produced by repeated immunizations with a VhH camelid domain protein.
Preservatives	0.01% (w/v) Sodium Azide
Form/Appearance	Liquid (sterile filtered)
Concentration	1.08 mg/mL
Storage	Store vial at -20° C prior to opening. Aliquot contents and freeze at -20° C or below for extended storage. Avoid cycles of freezing and thawing. Centrifuge product if not completely clear after standing at room temperature. This product is stable for several weeks at 4° C as an undiluted liquid. Dilute only prior to immediate use.
Note	For research use only
Application notes	Anti-VhH antibody has been tested by ELISA and Western Blot. Specific conditions for reactivity should be optimized by the end user. Some cross-reactivity to E.coli proteins may be observed.
Isotype	IgG
Clonality	Polyclonal
Purity	Anti-VhH is directed against the llama VhH protein fragment. The product was purified from monospecific antiserum by protein A chromatography. Anti-Vhh antibody detects recombinant VhH proteins, native Llama IgG2 and native Llama IgG3.
Dilution Range	ELISA: 1:10,000-1:50,000, WB: 1:1,000-1:5,000
Expiration Date	12 months from date of receipt.



Western Blot of Rabbit Anti-VhH Antibody...



Western Blot of Rabbit anti-VhH Antibody...



Western Blot of Rabbit anti-VhH antibody...