

Product Datasheet

MEK1 C-Term Antibody Biotin (orb420266)

Description	MEK1 antibody (Biotin)
Species/Host	Mouse
Reactivity	Human, Mouse, Rat
Conjugation	Biotin
Tested Applications	ELISA, WB
Immunogen	Anti-MEK1 Monoclonal Antibody was produced in mice by repeated immunizations with synthetic peptide corresponding to amino acid residues near the C-terminus conjugated to KLH.
Preservatives	0.01% (w/v) Sodium Azide
Form/Appearance	Lyophilized
Concentration	1.0 mg/mL
Storage	Store vial at 4° C prior to restoration. For extended storage aliquot contents and freeze at -20° C or below. Avoid cycles of freezing and thawing. Centrifuge product if not completely clear after standing at room temperature. This product is stable for several weeks at 4° C as an undiluted liquid. Dilute only prior to immediate use.
Note	For research use only
Application notes	Anti-MEK 1 Biotin Conjugated (MOUSE) Antibody has been tested by Western Blotting and ELISA. Specific conditions of reactivity should be optimized by the end user. Expect a band of approximately 43.5 kDa.
Isotype	IgG
Clonality	Monoclonal
Clone Number	13B6.G12

Biorbyt Ltd.

7 Signet Court, Swann's Road,
Cambridge, CB5 8LA, United Kingdom
Email: info@biorbyt.com, support@biorbyt.com
Phone: [+44 \(0\) 1223 859-353](tel:+44(0)1223859353) | Fax: [+1 \(415\) 651-8558](tel:+1(415)6518558)

Biorbyt LLC.

68 TW Alexander Drive,
Durham, NC, 27713, United States
Email: info@biorbyt.com, support@biorbyt.com
Phone: [+1 \(415\) 906-5211](tel:+1(415)9065211) | Fax: [+1 \(415\) 651-8558](tel:+1(415)6518558)

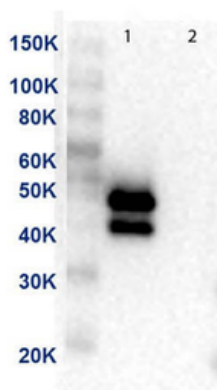
Antibody Type Primary Antibody

Purity This biotin conjugated protein A purified mouse monoclonal antibody reacts specifically with human MEK1. Anti-MEK1 is purified from tissue culture supernatant by protein A purification. Cross reactivity is expected to occur with human, mouse, and rat based on sequence identity of the peptide immunogen. This antibody does not react with the MEK2 isoform.

Uniprot ID **Q02750**

Dilution Range ELISA: 1:40,000, WB: 1µg/mL

Expiration Date 12 months from date of receipt.



Western Blot of Anti-MEK1 Antibody. Lane 1: MEK-1 recombinant protein. Lane 2: MEK-2 recombinant protein. Load: 50 ng per lane. Primary Antibody: Anti-MEK1 supernatant clone neat over night at 4°C. Secondary Antibody: Anti-mouse HRP at 1:40000 dilution.

Biorbyt Ltd.

7 Signet Court, Swann's Road,
Cambridge, CB5 8LA, United Kingdom
Email: info@biorbyt.com, support@biorbyt.com
Phone: [+44 \(0\) 1223 859-353](tel:+44(0)1223859353) | Fax: [+1 \(415\) 651-8558](tel:+1(415)6518558)

Biorbyt LLC.

68 TW Alexander Drive,
Durham, NC, 27713, United States
Email: info@biorbyt.com, support@biorbyt.com
Phone: [+1 \(415\) 906-5211](tel:+1(415)9065211) | Fax: [+1 \(415\) 651-8558](tel:+1(415)6518558)