

---

## Product Datasheet

### Hemoglobin A (beta chain) antibody (orb420235)

**Description**

Hemoglobin A (beta chain) antibody

**Species/Host**

Mouse

**Reactivity**

Human

**Conjugation**

Unconjugated

**Tested**

ELISA, WB

**Applications**
**Immunogen**

Anti-Hemoglobin A (beta chain) Monoclonal Antibody was produced in mice by repeated immunizations with synthetic peptide corresponding to amino acid residues near the N-terminus of Hb  $\beta$ -subunit conjugated to KLH.

**Preservatives**

0.02 M Potassium Phosphate, 0.15 M Sodium Chloride, pH 7.2 Preservative: 0.01% (w/v) Sodium Azide

**Form/Appearance**

Liquid (sterile filtered)

**Concentration**

1.04 mg/ml by UV absorbance at 280 nm

**Storage**

Store vial at  $-20^{\circ}\text{C}$  or below prior to opening. This vial contains a relatively low volume of reagent (25  $\mu\text{L}$ ). To minimize loss of volume dilute 1:10 by adding 225  $\mu\text{L}$  of the buffer stated above directly to the vial. Recap, mix thoroughly and briefly centrifuge to collect the volume at the bottom of the vial. Use this intermediate dilution when calculating final dilutions as recommended below. Store the vial at  $-20^{\circ}\text{C}$  or below after dilution. Avoid cycles of freezing and thawing.

**Note**

For research use only

**Application notes**

Anti-Hemoglobin A (beta chain) (MOUSE) antibody has been tested by ELISA, SDS-Page, and western blot. This antibody is designed for use in lateral flow. Specific conditions of reactivity should be optimized by the end user. Expect a band of approximately 16 kDa.

**Isotype**

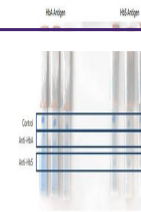
IgG2a

**Clonality**

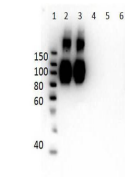
Monoclonal

**Purity**

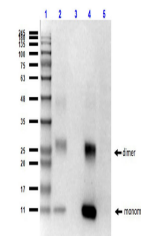
This protein A purified mouse monoclonal antibody reacts specifically with human HbA beta chain isoform. Anti-Hemoglobin beta  $\beta$  is purified from tissue culture supernatant by protein A purification. Blast analysis shows 100% homology to Human, Pan troglodytes, Pan paniscus, Gorilla gorilla gorilla, and Hylobates lar. This antibody does not react with the



Lateral Flow Results of Anti-HbA (Hemogl...



Western Blot of Mouse Anti-Hemoglobin A ...



Western Blot of Mouse Anti-human hemoglo...