
Product Datasheet

Hemoglobin A (beta chain) antibody (orb420234)

Description

Hemoglobin A (beta chain) antibody

Species/Host

Mouse

Reactivity

Human

Conjugation

Unconjugated

Tested

ELISA, WB

Applications
Immunogen

Anti-Hemoglobin A (beta chain) Monoclonal Antibody was produced in mice by repeated immunizations with synthetic peptide corresponding to amino acid residues near the N-terminus of Hb β -subunit conjugated to KLH.

Preservatives

0.02 M Potassium Phosphate, 0.15 M Sodium Chloride, pH 7.2 Preservative: 0.01% (w/v) Sodium Azide

Form/Appearance

Liquid (sterile filtered)

Concentration

1.04 mg/ml by UV absorbance at 280 nm

Storage

Store vial at -20°C prior to opening. This product is stable at 4°C as an undiluted liquid. For extended storage, aliquot contents and freeze at -20°C or below. Avoid cycles of freezing and thawing. Dilute only prior to immediate use.

Note

For research use only

Application notes

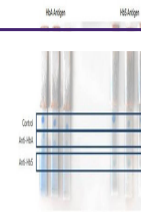
Anti-Hemoglobin A (beta chain) (MOUSE) antibody has been tested by ELISA, SDS-Page, and western blot. This antibody is designed for use in lateral flow. Specific conditions of reactivity should be optimized by the end user. Expect a band of approximately 16 kDa.

Clonality

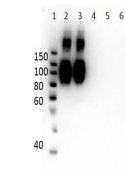
Monoclonal

Purity

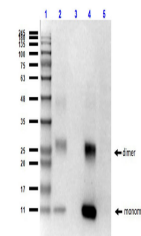
This protein A purified mouse monoclonal antibody reacts specifically with human HbA beta chain isoform. Anti-Hemoglobin beta β is purified from tissue culture supernatant by protein A purification. Blast analysis shows 100% homology to Human, Pan troglodytes, Pan paniscus, Gorilla gorilla gorilla, and Hylobates lar. This antibody does not react with the HbS, HbF (gamma), or HbC forms. HbA antibody cross reacts with HbA-2.

Uniprot ID
[P68871](#)
NCBI
[NP_000509.1](#)


Lateral Flow Results of Anti-HbA (Hemogl...



Western Blot of Mouse Anti-Hemoglobin A ...



Western Blot of Mouse Anti-human hemoglo...